

Setup (iOS)

1. Make sure that you have a stable and working wireless network.
2. Plug the Bond into an outlet.
3. The Bond center ring light will be white while the bond is in boot up mode.
4. The Bond center ring light will be flashing green when the Bond is ready to be used. If the Bond light ring is not flashing green, try performing a WiFi (Green) reset. <https://olibra.zendesk.com/hc/en-us/articles/115002787731-bond-bridge-How-to-connect-to-a-new-WiFi-network-using-the-Green-WiFi-Reset?product=bond-bridge>

*** Important note ***

If the Bond center ring light is red or white, please contact customer service at customerservice@bondhome.io.

5. Download the Bond Home application at <https://apps.apple.com/us/app/bond-home/id1447691811>
6. Open the Bond Home application.
7. If you already have a Bond account, simply log in and continue to the next step. If you do not have a Bond account, press Create Account and enter your name, email, and a password and click Create Account.
8. Once logged in, click the + sign on the upper right corner of your application screen and choose Bond Bridge.
9. Once you are on the setup screen, select Continue.
10. Go to your settings, select WiFi, and connect to the Bond Config network. It should look like Bond Config followed by the Bond serial number. If you are unable to connect to the Bond Config WiFi, please use the procedure in <https://olibra.zendesk.com/hc/en-us/articles/360000320952-Can-t-Connect-to-BOND-WiFi-Web-user-Interface> to manually connect the Bond to your account.
11. Select Continue.
12. Select the network you wish to connect to and enter the network password. If you do not see your network, refresh the list by pulling the list down and releasing it.
13. Once connected to your network, the Bond center ring light will turn blue.

*** Important note ***

If the bond is unable to connect to your WiFi network, the Bond center ring light will turn orange. Please try the following:

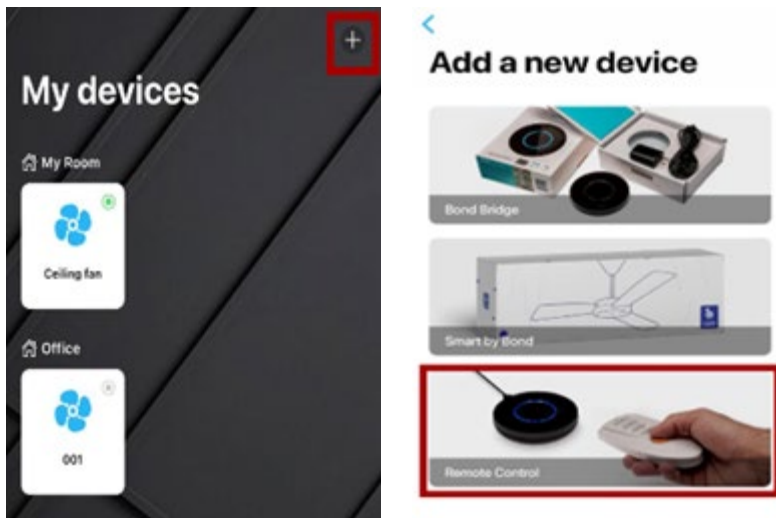
1. Make sure you are correctly entering your password.
2. Try a WiFi reset and try the setup process again.
3. Try resetting your WiFi router.
4. Unplug your Bond, wait 30 seconds, and plug it back in.

13. If you are still having issues connecting to WiFi, please contact us at customerservice@bondhome.io.

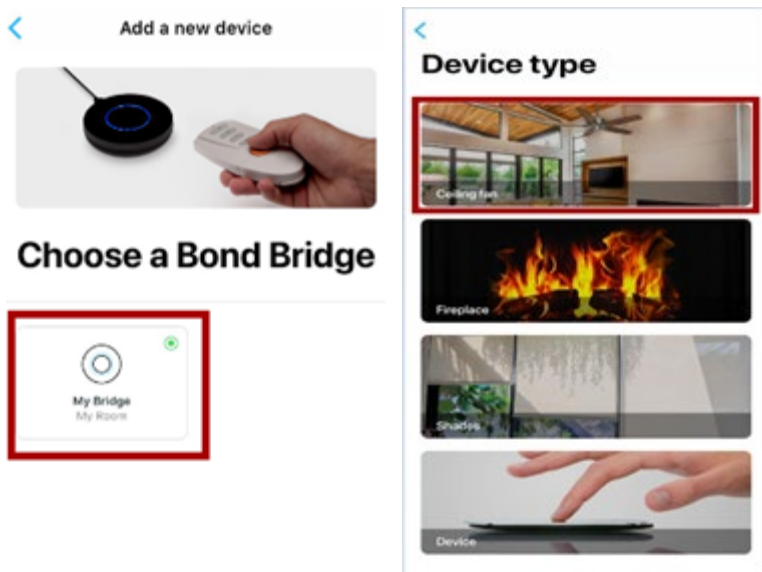
[back to top](#)

Adding a New device (iOS)

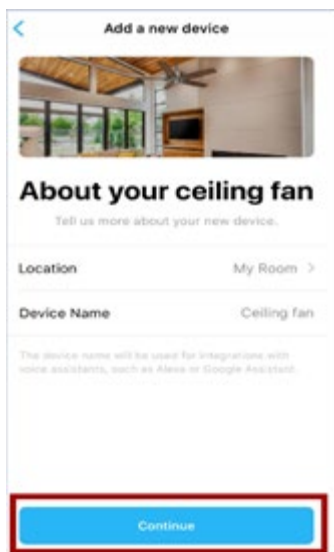
1. From the “My Devices” screen on the bond home app., click the + sign on the upper right corner of the screen and choose Remote Control.



2. Choose your bond under and select a device type.



3. Once you are on the “About your fan” screen, where you can set the device name & location, then select Continue.

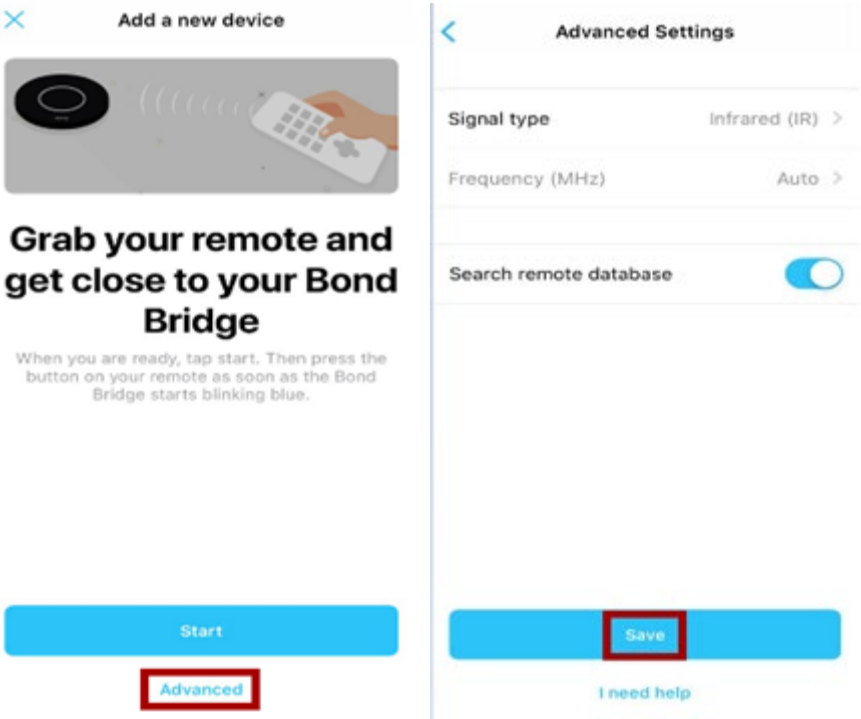


4. Choose the function/button that best represents the function of your remote to be programmed into the bond – i.e. Power On/Off, Speed, Light, etc.

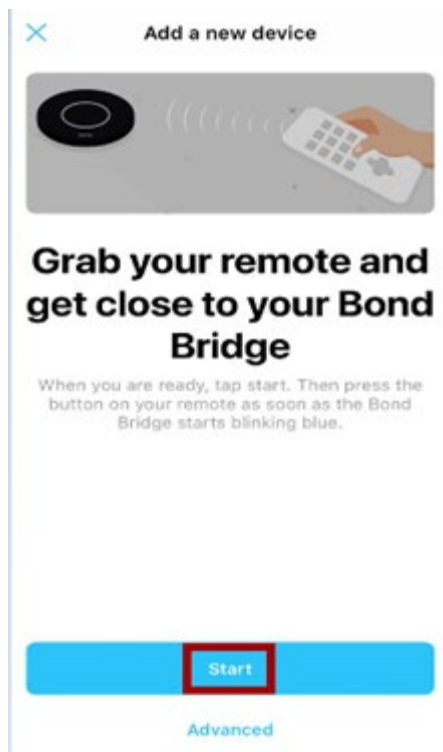


*** Important Note***

If your remote is an IR remote, please select “Advanced”, change Signal Type to IR and click Save.



5. Begin the scanning process on the application by following the on-screen instructions and selecting Start.



6. Aim your remote at the Bond and press the button repeatedly until the bond center ring light turns green. Please have the remote about 2 feet away from the Bond.



7. Once the Bond center ring lights turn blue, you will be asked to choose your remote from a list of remotes that matched the signal. Test them and select the best fit.
8. Select "Use this remote".
9. Select Done.

*** Important note ***

If you were unable to program your remote please try the following:

1. Try changing the remote batteries.
2. Instead of pressing and holding the function, try pressing the function repeatedly.
3. Get closer (1 foot) or further away (4 feet) from the Bond and try again.
4. Try pointing the remote directly at the Bond front or sides when recording.
 1. The front part of the Bond unit is opposite the USB port.
5. Go back to step 4 for choosing a command and try recording a different function.

6. If unsuccessful, power cycle the Bond by unplugging it, and plugging it back in after 30 seconds.
7. If you are still unable to program your remote, please contact us at customerservice@bondhome.io.

[back to top](#)

Siri Shortcuts

The link below will open a new tab with a video for setting up and using Siri shortcuts.

[Siri shortcuts](#)

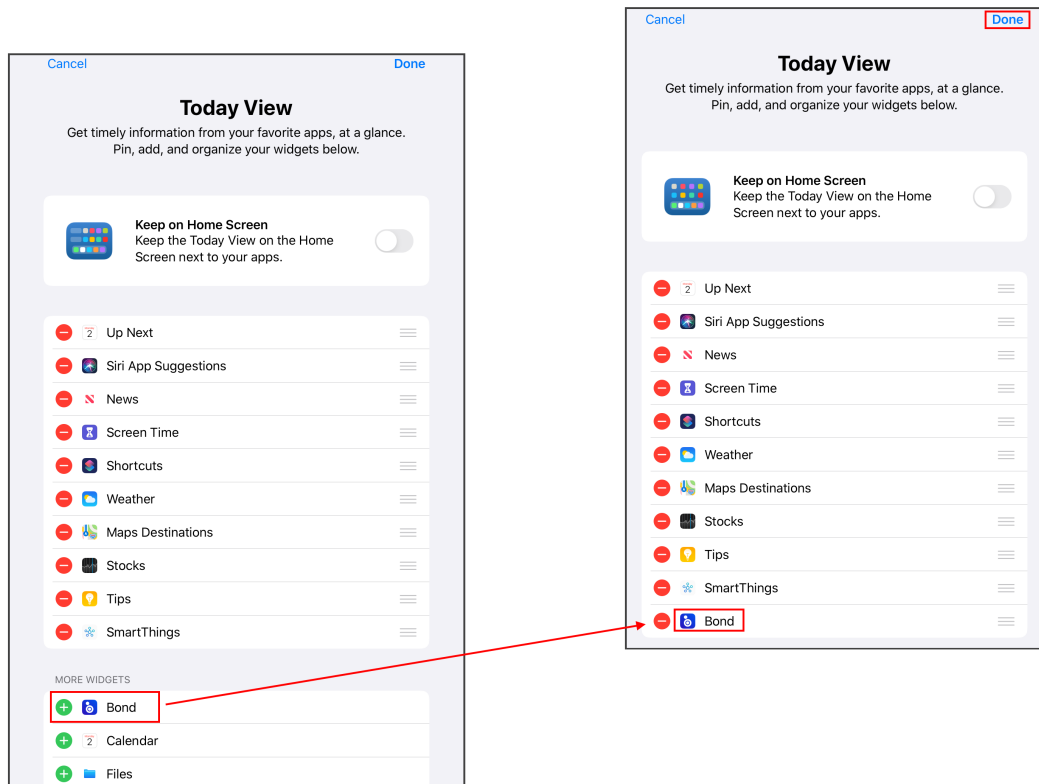
Important Note

The Siri shortcuts will only work on iOS devices using software version 13 and above.

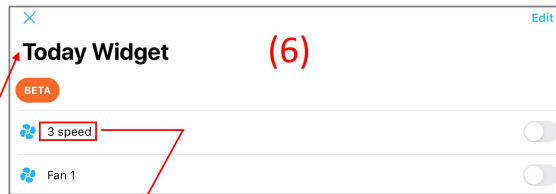
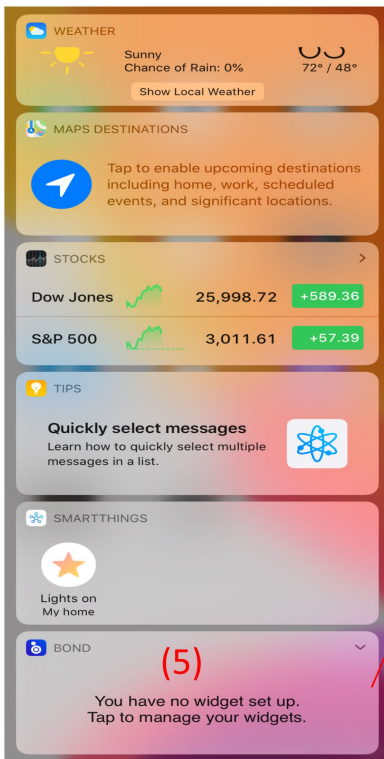
[back to top](#)

iOS Widgets

1. In order to add widgets to the Today View, you must first [setup the Bond](#) and [add your devices](#). If you have not done that, please do so before proceeding to the next step.
2. Swipe right on the home screen to access the Today View.
3. You should now see the Bond widget under More Widgets, select it.

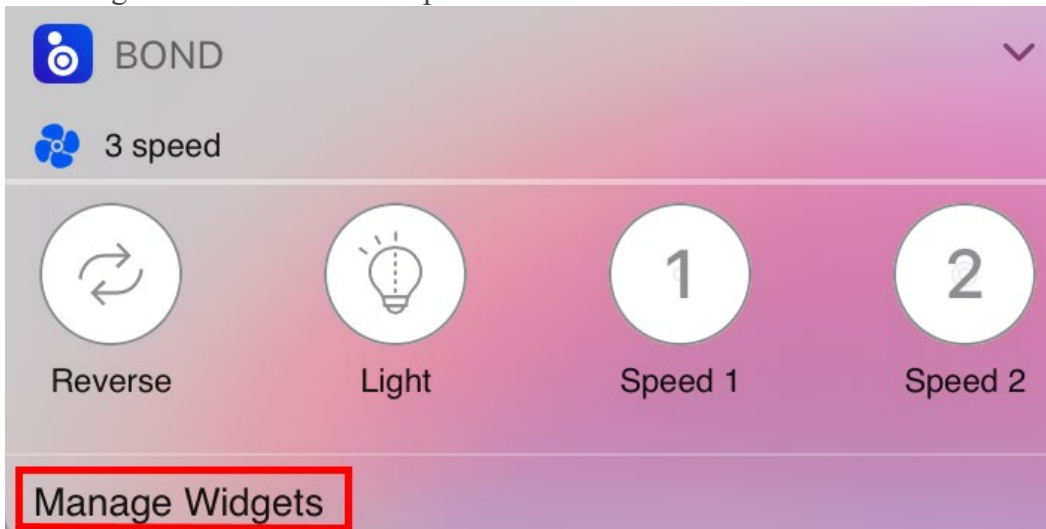


4. Once the Bond widget is in the list of activated widgets, select Done.
5. Select the blank Bond widget to start adding devices from your Bond Bridge.
6. Select the device you want to control.
7. Select the specific functions for the device you want to control through the widget.



***note - selecting Edit will allow you to change the position of the Bond device or the function.*

8. The widget is now available to operate the Bond device.



9. If you would like to add additional Bond devices to the widget select Manage Widgets.

1. You can also add commands from the the settings menu for the Bond device.

[back to top](#)